

1 [reed flicks
short dense phrases
silence inbetween]

2 [quiet popping
high pitched]

3 [slide high to low
as slowly as possible]

4 [low quiet
long tone
A/A_b]



6 [col legno battuto
high very quiet]

7 [col legno battuto
high very quiet]

1
heard in the distance
E \flat E D
2
very quiet

3
snap
pop
bending
short
4
quiet

3
harmonics
G A \flat
let fully decay

4
small groups
rapid articulation
lots of silence

5
H
mp \leftrightarrow *pp*
p $\cdot\cdot$ o \cdot H \cdot p $\cdot\cdot$ o o $\cdot\cdot\cdot$ o

6

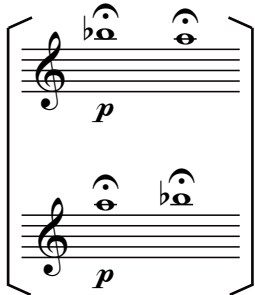
pp

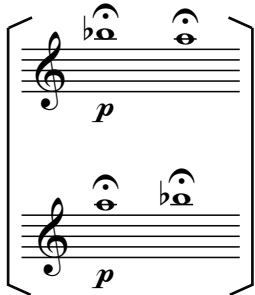
7

pp

6

p

1  2

1  2

p

p

3 [quiet dense
static]

4 [static-pink noise
slow LFO]

5 

6 [arco on tail piece
long tone]


7 [arco on tail piece
long tone]

1 [high breath sounds]

2 [half valve sounds quiet]

3 [sounds from behind bridge]

4 [extremely high sine tone]

5 []

The musical notation for exercise 5 consists of a single staff with a treble clef. It features a series of rhythmic patterns and fingerings. The notation includes: a quarter note with a '5' below it; a sixteenth-note run with a '6' above it; a quarter note with a '5' below it and '5-10 s.' to its right; a quarter note with a '3' below it; a quarter note with a '7' below it and '8-13 s.' to its right; a quarter note with a '5' below it and '10-12 s.' to its right; a quarter note with a '3' below it; a quarter note with a '6' below it; a quarter note with a '5' below it and '4-8 s.' to its right; a quarter note with a '3' below it and '6-9 s.' to its right; and a quarter note with a '3' below it.

6 [extremely high harmonic glissani up and down very slowly small distances]

7 []

1
2


breath sounds
imitating
brushes

3
4

bending pitch
as far
and
as long as
possible
slowly

5

scrape
brushes
low drum



The musical notation consists of a single staff with various rhythmic and melodic symbols. It starts with a half note, followed by a quarter note, a dotted quarter note, and a quarter note. There are several rests and other rhythmic markings throughout the staff, including a group of sixteenth notes and a dotted eighth note.

6

high harmonic
with scraping

7

low pizz.
after bass drum

1

2

Detailed description: This block contains two musical exercises. Exercise 1 is on a single staff with a treble clef, featuring a sequence of eighth notes with various accidentals (flats and naturals) and rests. Exercise 2 is on a single staff with a bass clef, featuring a sequence of eighth notes with various accidentals and rests. Both exercises are enclosed in large square brackets.

5

6

Detailed description: This block contains two musical exercises. Exercise 5 is on a single staff with a treble clef, featuring a sequence of eighth notes with various accidentals and a triplet. Exercise 6 is on a single staff with a bass clef, featuring a sequence of eighth notes with various accidentals and a triplet. Both exercises are enclosed in large square brackets.

7

Detailed description: This block contains a single musical exercise on a single staff with a treble clef. It features a sequence of eighth notes with various accidentals and two triplet markings. The exercise is enclosed in large square brackets.

1

2 [after player 5 makes a sound play:

2

3 [after player 5 makes a sound play:

4

5

6

7

1 

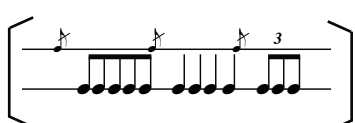
1 

2 

3 

3 

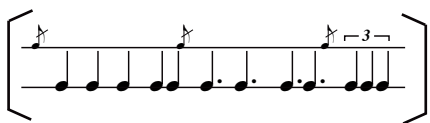
4 

4 

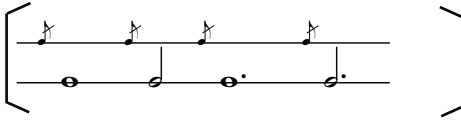
5 

5 



6 

6 

7 

7 

2  Musical notation for a 2-measure phrase on a single staff. The notation includes eighth notes, quarter notes, and a half note.

3 
4  Musical notation for a 3-measure phrase on a single staff, followed by a 4-measure phrase on a single staff. The notation includes eighth notes, quarter notes, and a half note.

5  Musical notation for a 5-measure phrase on a single staff. The notation includes eighth notes, quarter notes, and a half note.

6  Musical notation for a 6-measure phrase on a single staff. The notation includes eighth notes, quarter notes, and a half note.

1

2

3


f *mp* *ff* *p* *pp*

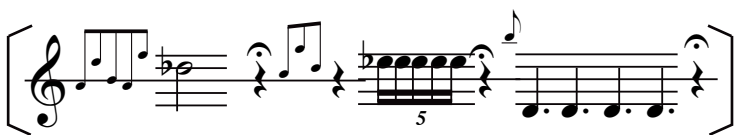
4

6

7

1 


2 

3 

4 

5 


6 

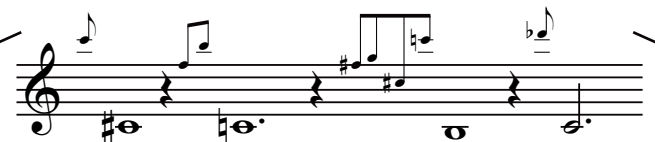
7 

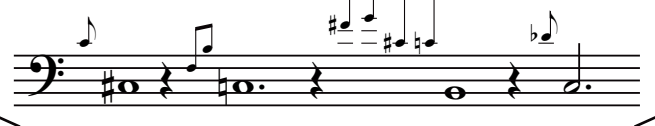
2  play once
after 6

3  play once
after 3

4  play once
after 4

6  begin cycle
play again
after 4

1 

7 

2

mp

3

mp

4

mp

1 [short sparse
slap tongue
vary dynamic]

2 [short sparse
pops
vary dynamic]

4 [gliss]

5 [*ff p* *ff p* *ff pp*]

6

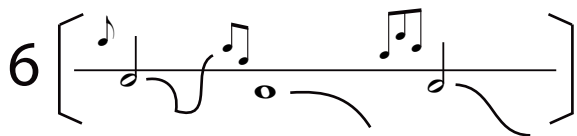
7

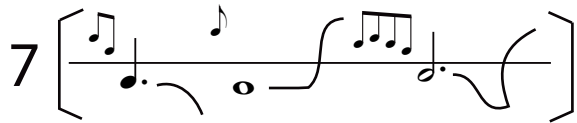
1 

2 

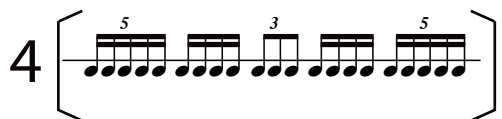
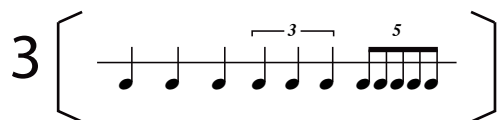
3 

5 


6 


7 

6 



1  1 [long tone
E or Eb]

2  2 [long tone
F or E]


3  3 [long tone
D or Eb]

4  4 [long tone
E or Eb]

5 

5 

6  6 [long tone
E or Eb]

7  7 [long tone
D or F]

1

2

3

4

5

bass drum

7

2

very slow

4

6

1

3

4

5

6

1

2

7

3 *extremely slow*

5 *pp*

4

6

1

4

5

2

3

6

7

□ = 8 sec.

4 [3] [♯] [6] [3] [♯] [♯] [4] [♯]

5 [1] [4] [♯] [1] [2] [♯] [3] [4]

7 [2] [♯] [2] [♯] [♯] [4] [2] [♯]

1

6

2

7

1 

2 

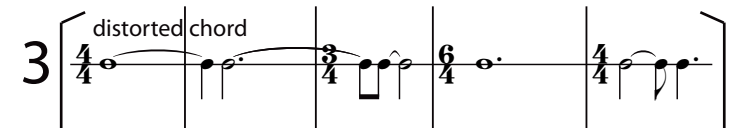
3 

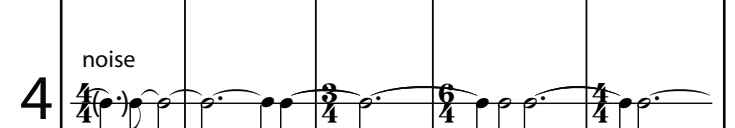
4 

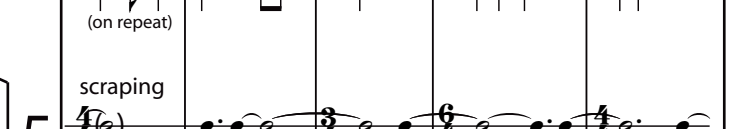
5 

6 

7 

3 

4 

5 

2

6

7

3

4

6

1

fast

3

2

3

7

3

3

2

5

3

6

5

7

1

4

6

2

3

5

7

3

6

7

This system contains two staves, numbered 6 and 7. Both staves feature a series of four chords, each marked with a fermata. The chords are: F#4 (measure 6), Bb4 (measure 7), F#4 (measure 8), and Bb4 (measure 9). The notes are written in a simplified style, with stems and dots indicating pitch and duration.

1

2

3

4

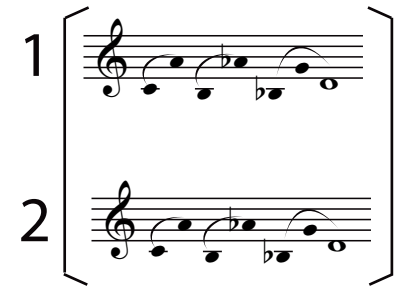
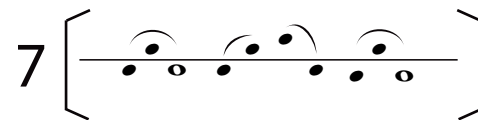
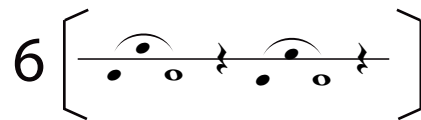
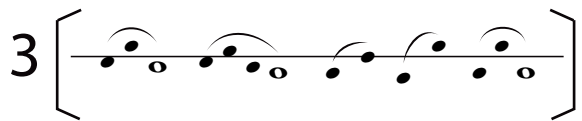
5

This system contains five staves, numbered 1 through 5. The music is in 3/8 time and features a sequence of eighth notes with trills. The notes are: G4 (trill), A4, B4, C5, B4, A4, G4. The trills are indicated by 'tr' above the notes. The staves are numbered 1 through 5, with the first four staves containing the melodic line and the fifth staff containing a bass line.

6

7

This system contains two staves, numbered 6 and 7. The music is in 4/4 time and features a sequence of eighth notes with trills. The notes are: G4 (trill), A4, B4, C5, B4, A4, G4. The trills are indicated by 'tr' above the notes. The staves are numbered 6 and 7, with the first staff containing the melodic line and the second staff containing a bass line.



2 [cup mute
very slow]

3 []

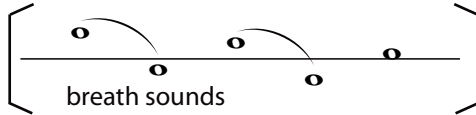
4 [long sound
low static
mf]

5 [very long/low]

5 [cowbell
mp]

6 []


7 []

1 []
breath sounds

3 []
use harmonics (let ring)

5 []
skin only

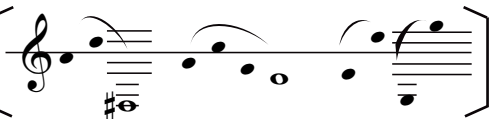
6 []
pizz.


7 []
slow gliss

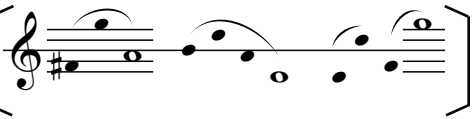
1 

2 

2 
mp

3 

3 
mp

4 

5 
skin only

6 

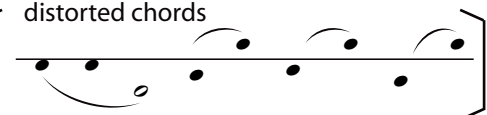
7 

1 [G F# B A#]

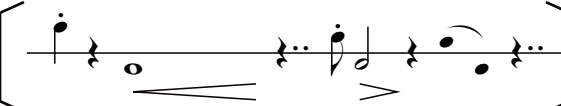
2 [G F# B A#]

3 [G F# B A#]

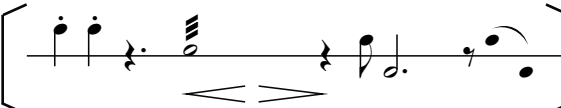
3 [distorted chords]



4 [musical notation]



5 [musical notation]



6 [musical notation]



7 [musical notation]



1 [Treble clef staff with notes: G4, A4, B4, C5, B4, A4, G4]

2 [Treble clef staff with notes: G4, A4, B4, C5, B4, A4, G4]

3 [Treble clef staff with notes: G4, A4, B4, C5, B4, A4, G4]

4 [Treble clef staff with notes: G4, A4, B4, C5, B4, A4, G4] extremely high

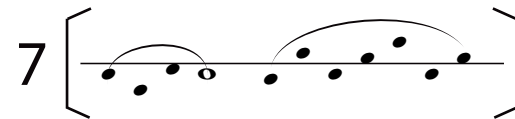
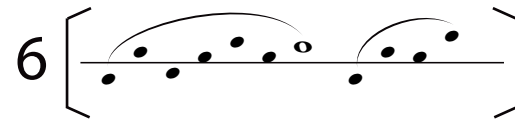
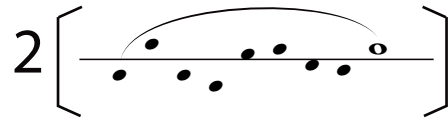
5 [Treble clef staff with notes: G4, A4, B4, C5, B4, A4, G4]

6 [Treble clef staff with notes: G4, A4, B4, C5, B4, A4, G4]

7 [Bass clef staff with notes: G2, A2, B2, C3, B2, A2, G2]

8 [Treble clef staff with notes: G4, A4, B4, C5, B4, A4, G4]

9 [Bass clef staff with notes: G2, A2, B2, C3, B2, A2, G2]

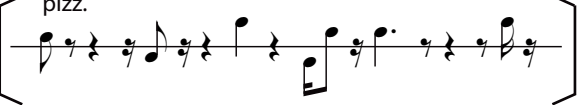


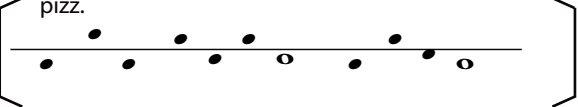
1 []

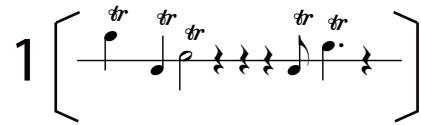
2 [c]

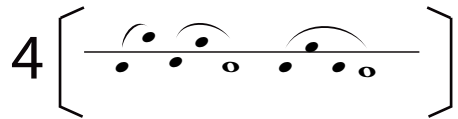
3 [$\hat{A}m7$ $\hat{B}m7$ $\hat{C}m7$ $\hat{G}m7$]

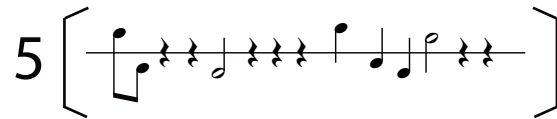
4 [A]

6 []

7 []

1 

4 

5 

6 

7 

1

2

3

4

5

6

7

